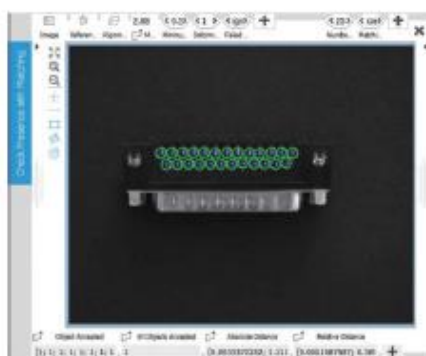
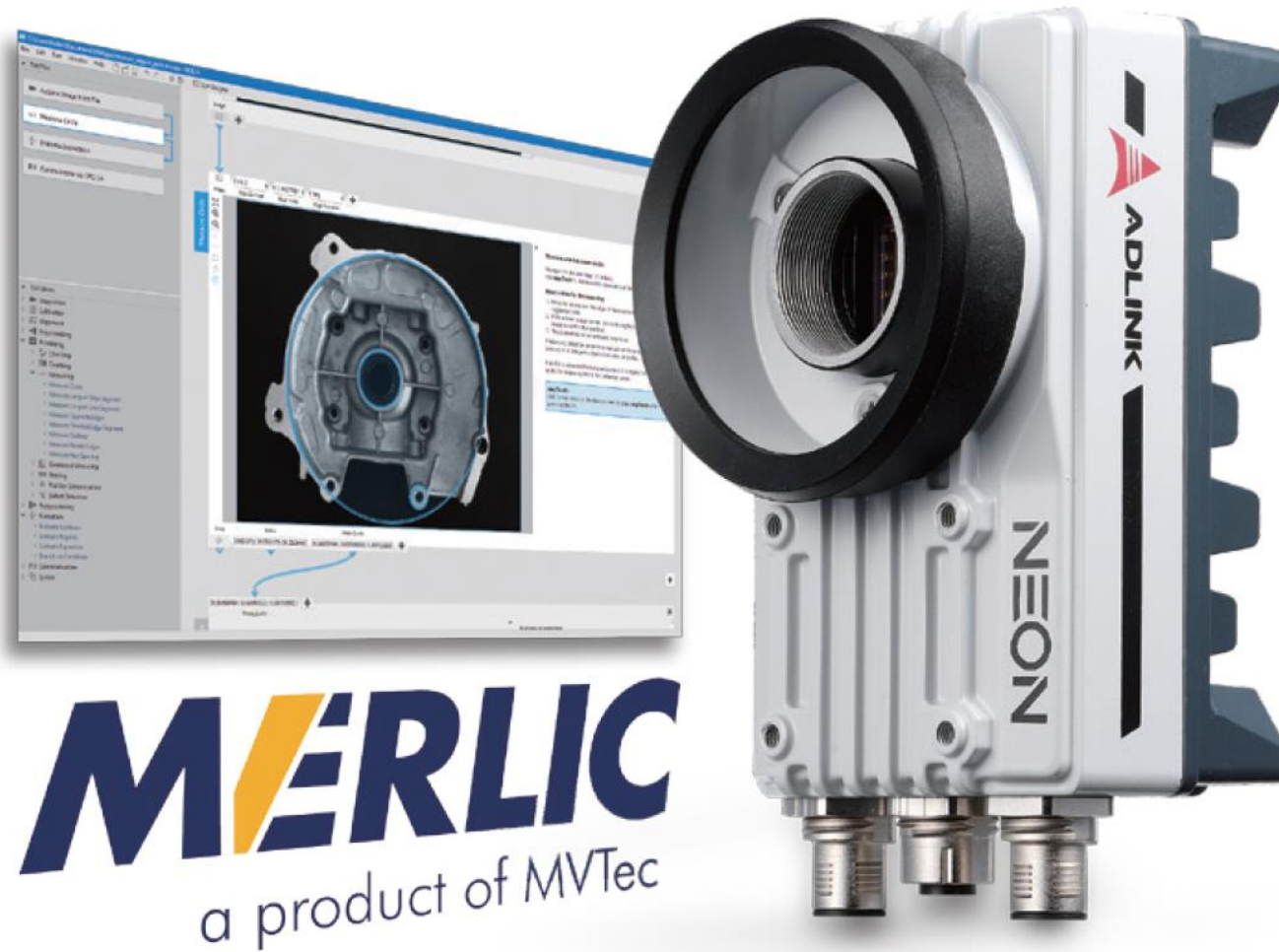


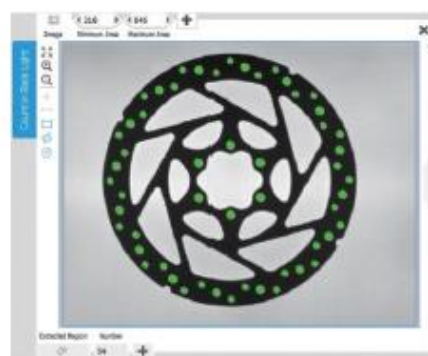
Smart Camera- MERLIC

MERLIC software embedded

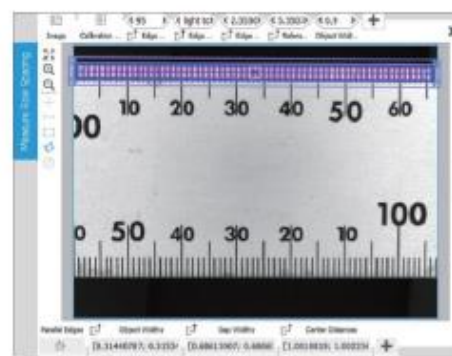
- 프로그래밍 없이 머신 비전 애플리케이션을 쉽고 빠르게 구축 할 수 있는 All in one 소프트웨어
- 프로그래밍 없이 Drag and Drop 을 통해 머신 비전 알고리즘을 쉽게 구현



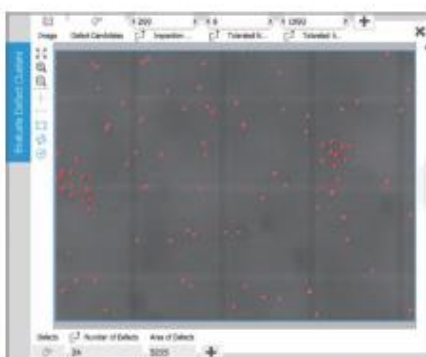
Checking



Counting



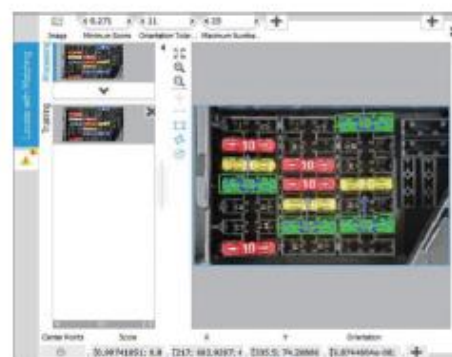
Gauge



Defect Inspection



OCR



Position Determination

FPGA 영상 처리

- LUT, 음영 보정, 관심 영역 기능 등 영상 처리 기능을 사전 설치하여 FPGA를 CPU 태스킹의 공동 프로세서로 사용.
- C++를 사용하여 Microsoft Visual Studio 환경에서 FPGA 기능을 컴파일할 수 있는 API를 제공
- 기존 스마트 카메라보다 더 높은 등급의 CPU를 사용

Specification

| | |
|---------------------------|--|
| Model name | NEON-1021-M |
| Processors & Memory | |
| Processor | Intel® Atom E3845 processor, quad core @ 1.91 GHz |
| Display | VGA, max. 2048 x1152 at 60 Hz |
| RAM | 4 GB DDR3L |
| Storage | 16 to 32 GB solid state drive |
| Image processing | LUT, Shading correction, Multi-ROI, binning |
| Sensor | |
| Image Sensor | e2v EV76C570 |
| Resolution | 1600 x 1200 |
| Sensor Size | 1/1.8" |
| Format | mono |
| Pixel Size (µm) | 4.5 |
| Frame Rate(fps) | 60 |
| Shutter | Global |
| Trigger Mode | External trigger, software trigger, free execution |
| I/O interface | |
| Trigger input | 1x optical cut-off trigger input |
| Digital output | 4x sink, max sink 100 mA sink max 30 VDC |
| Digital input | 4x TTL level input |
| PWM lighting adjustment | driving method: 500 mA applied lighting: 24 VDC illuminators dimming resolution: 1000:1 (18 kHz) |
| Ethernet | 1 x GbE |
| Serial Communication | 1 x RS-232 (TX and RX only) |
| USB | 1 x USB 2.0 |
| Mechanical | |
| Camera Size | 68.5mm W x 110mm D x 52.7 mm H |
| Lens mount | C mount |
| Connector | 1 x M12 8-pin (female), 1xM12 17-pin (male), 1x M12 12-pin (male) |
| Software support | |
| Operation System | Windows 7, Windows Embedded Standard 7 |
| Machine Vision Software | MVTec MERLIC 3.0 |
| Environment & Electricity | |
| power consumption | 24 VDC +/-10%, 13W (typical) |
| operating temperature | -20°C to 50°C (-4°F to 122°F) |
| Vibration | 5 Grms, 5-500 Hz, 3 axis |
| Certified | IP67, CE, FCC Class A, UL |